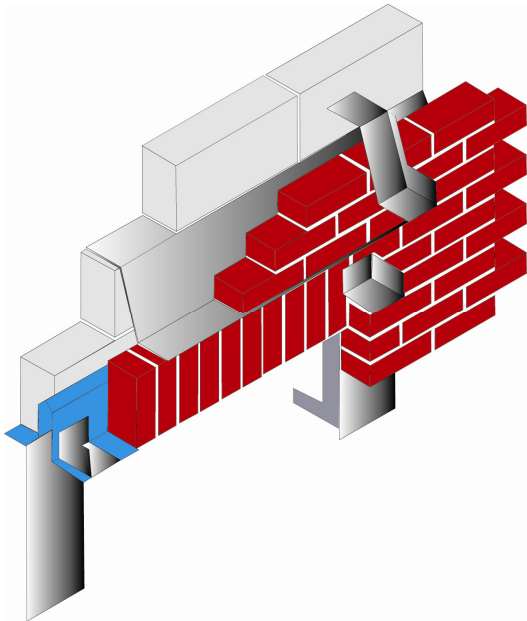


**Plysolene Limited**

# **RIBA CPD Seminar**



**DPCs by D-Sign**

- ◆ Definitive Guide on DPC detailing
- ◆ Principles of Cavity Tray Design
- ◆ DPC Compatibility Issues
- ◆ Unique history of DPCs
- ◆ BS Requirements
- ◆ Supporting literature
- ◆ Gas Resistant and Insulated DPCs

This lunch time Seminar will give you a clear understanding of the history and development of DPCs, cavity tray systems and associated products. The types of DPC material that are available will be discussed and where they should be used in accordance with BS5628 PT3.

Examples of installations, within the Presentation, show how and when DPC design fits into your Plan of Work. This Seminar concentrates on the principles of DPC and cavity tray design and provides an opportunity for your technical queries to be answered.

A complimentary 23-page booklet is available for you to keep, giving further guidance and valuable information.

## **Plysolene Limited**

21 Star Industrial Estate  
Partridge Green  
West Sussex

Phone: 01403 713555  
Fax: 01403 713666  
E-mail: [Plysolene@watts-group.co.uk](mailto:Plysolene@watts-group.co.uk)  
[www.plysolene.co.uk](http://www.plysolene.co.uk)

Attendance at this Seminar  
counts towards two hours  
of your CPD.

Certificates of Attendance  
issued on completion.

Contact: Mike Tierney at D-Sign Limited  
on 07976 842113 Email: [info@d-signgroup.com](mailto:info@d-signgroup.com)

